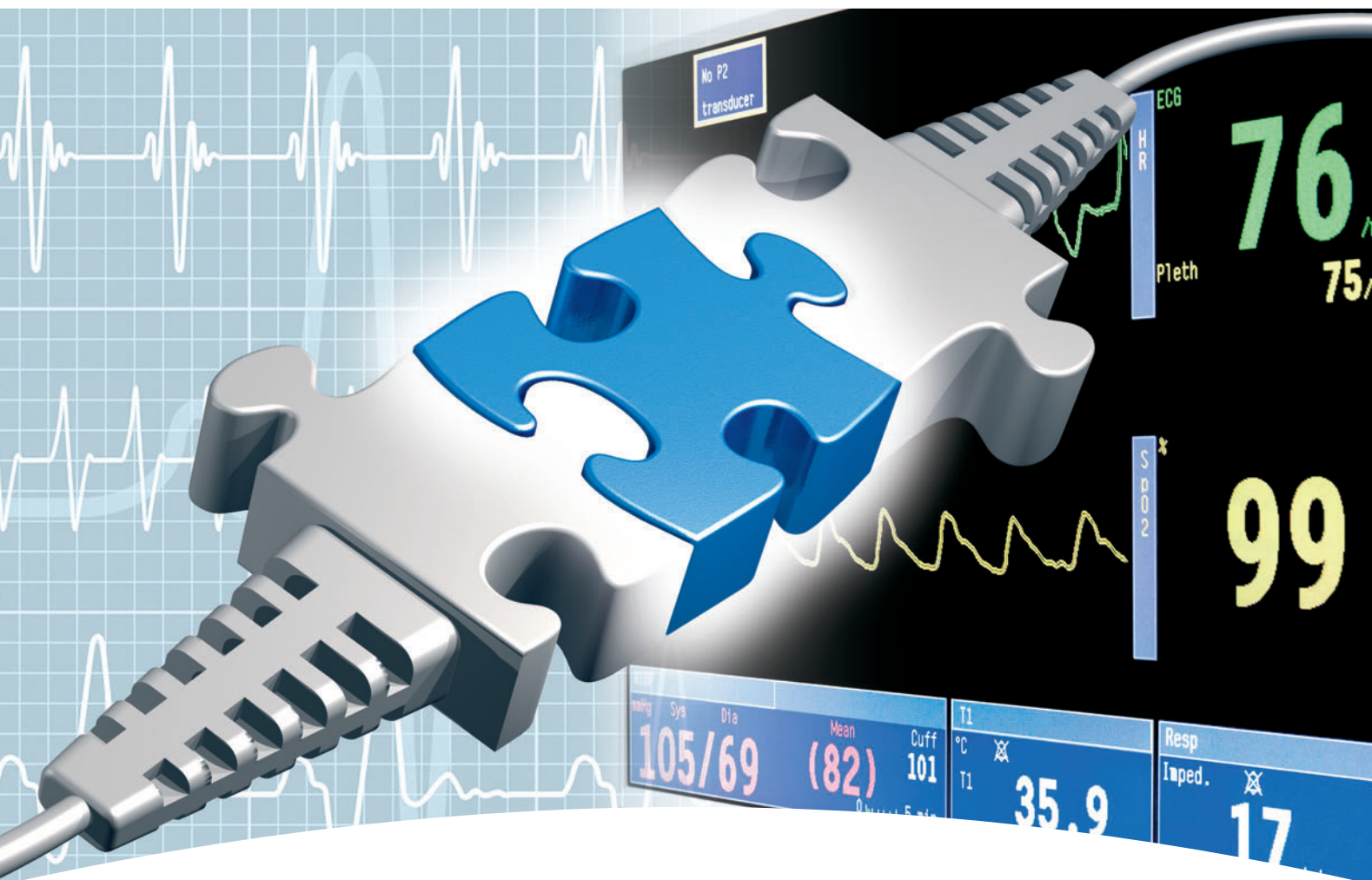


# Always compatible!

ENVITEC  
by Honeywell



**One for all and all for one!**  
**Greater flexibility with EnviteC SpO<sub>2</sub> sensors**

## ***FlexMon***<sup>®</sup> – the ingeniously simple solution

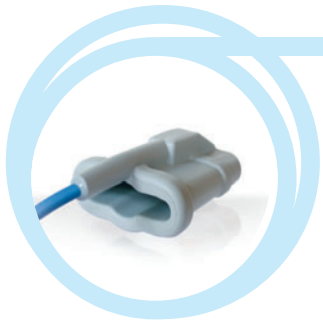
The new system developed by EnviteC, FlexMon<sup>®</sup>, is the crucial step towards the efficient use of sensors.

In future the individual EnviteC SpO<sub>2</sub> sensor can be connected to any device in a family of monitors, thus significantly reducing the number of sensors required. FlexMon<sup>®</sup> sensors not only reduce costs considerably, they also save an enormous amount of time during operation. Both, users and hospital purchasers, benefit from this simplification.

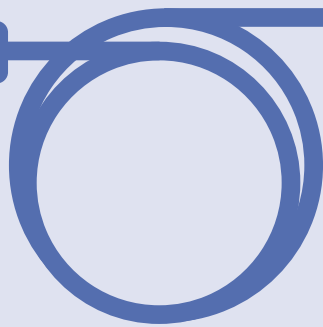


Product example

**EnviteC  
SpO<sub>2</sub> sensor**



**FlexMon®**



**Device from the  
monitor family**



**The advantages**


- Lower investments
- Greater flexibility
- Cost savings
- Optimized stock-keeping
- Better overview



**Standardized sensor range**

The EnviteC SpO<sub>2</sub> sensors listed here are available with the new standardized plug-in connector.

FingerClip · SoftTip®  
Ear sensor · Disposable Sensors

 Made in Germany

EnviteC-Wismar GmbH  
a Honeywell Company  
Alter Holzhafen 18, 23966 Wismar, Germany

Phone: +49 (0) 3841 / 360-1  
Phone: +49 (0) 3841 / 360-200 Sales  
Fax: +49 (0) 3841 / 360-222  
E-mail: info@envitec.com



Product example

**Different monitor versions**

FlexMon® enables the sensors to be used on a wide variety of monitors with different connector options. Both portable and stationary individual monitors and device systems can use the EnviteC SpO<sub>2</sub> sensor range alternately.

**Call us; we would be pleased to advise you!**



**ENVITEC**  
by Honeywell

[www.envitec.com](http://www.envitec.com)